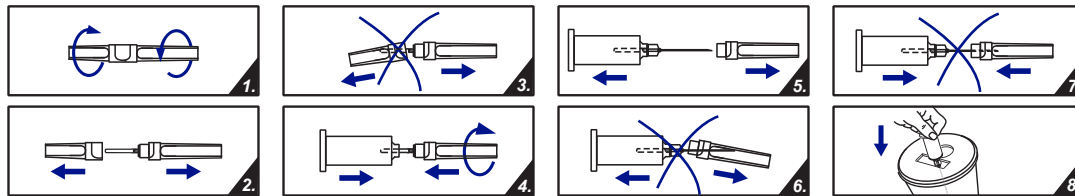


Instructions for use

CHIRAVAC™

Blood collection needles

CHIRANA
T. Injecta



Indications for use:

Blood collection needles for single use are intended for blood collection in connection with blood collection tube.

Precautions:

- The handling of Blood Collection Needles must be in accordance to the policies and procedures of your facility;
- HBV, HCV, HIV and other infectious diseases can be transmitted through contact with biological samples. In the event of exposure to biological samples, ensure that appropriate medical attention is obtained;
- Discard all Blood Collection Needles in biohazard containers approved for their disposal;
- Wear gloves during venipuncture and when handling blood collection tubes to minimise exposure hazard;
- Do not use Blood Collection Needles after their expiry date.

Equipment required for specimen collection:

Be sure that the following materials are readily accessible before performing venipuncture:

- All necessary blood collection tubes, identified for size, draw and additive;
- Labels for positive patient identification of samples;
- Blood collection needles and holders;
- Practice general safety precautions, using gloves and appropriate apparel for protection from exposure to blood-borne pathogens;
- Alcohol swab for cleansing site;
- Tourniquet;
- Adhesive plaster or bandage;
- Sharps disposal container for safe disposal of used needle.

Venipuncture Technique and Specimen Collection:

- 1) Remove the Protective short cap from the valve part of the needle. (Picture 1. and 2.) Do not remove the Protective short cap at an angle, in order to avoid side puncture of rubber sleeve! (Picture 3.)
- 2) Thread the needle perpendicularly into the holder. (Picture 4.) Ensure the needle is firmly seated so that it does not unthread during use. Angled threading of the needle into the holder can result in damage to the thread of the holder and needle and can cause the needle to loosen during venipuncture.
- 3) Select the puncture site. Prepare the venipuncture site with appropriate antiseptic.
DO NOT PALPATE THE VENIPUNCTURE AREA AFTER CLEANING!
- 4) Remove the Protective long cap from needle. (Picture 5.) Do not remove the Protective long cap at an angle! (Picture 6.)
- 5) Place the patient's arm in a downward position. Perform the venipuncture, with the patient's arm downward and the tube cap upper-most.
- 6) Push tube into the holder and onto the needle valve fully puncturing the rubber diaphragm. Center tubes in holder when penetrating the cap to prevent sidewall penetration and subsequent premature vacuum loss.
- 7) REMOVE THE TOURNIQUET AS SOON AS BLOOD APPEARS IN THE TUBE. DO NOT ALLOW THE CONTENTS OF THE TUBE TO CONTACT THE CAP OR THE END OF THE NEEDLE DURING THE PROCEDURE. i.e. under no circumstances should the tube be turned upside down during the procedure always hold tube in place by pressing the tube with the thumb to ensure complete vacuum draw.
- 8) Place succeeding tubes in the holder. Ensure that the contents of the tube do not come into contact with the cap or the needle tip during blood collection.
- 9) As soon as blood stops flowing into the last tube, carefully remove the needle from the vein, applying pressure to the puncture site with a dry sterile swab until bleeding stops. Once clotting has occurred, apply an adhesive plaster or bandage if desired.

! WARNING:

- Dispose of the used needle with holder in an appropriate disposal device. DO NOT RECAP! (Picture 7.) Recapping of needles increases the risk of needle stick injury.
- After venipuncture the top of the cap may contain residual blood. Take proper precautions when handling tubes to avoid contact with this blood. Any needle holder that becomes contaminated with blood is considered hazardous and should be disposed safely of immediately in accordance with local regulations. (Picture 8.)
- Blood collection needle are single-use only and should be disposed safely in accordance with local regulations.
- To avoid serious risk of infection, do not re-use or share needles.
- Do not use needles if the individual packaging is damaged or if the needle appears to be bent or damaged.
- This product does not contain any natural rubber latex.

! CAUTION:

- Before using the blood collection needle consult its instruction for use.



Caution



Consult instructions for use



Serial number



Batch code



Date of manufacture



Used by



Sterilized by Ethylene Oxide



Manufacturer



Pyrogen free



Do not reuse



LATEX free



Do not use if package is damaged



Keep away from sunlight



Temperature limitation



Keep dry



Fragile, Handle with care



CHIRANA T. Injecta, a.s.
Nám. Dr. Schweitzera 194
916 01 Stará Turá
Slovak Republic
Tel.: +421/32/7709 991
Fax.: +421/32/7709 956
www.t-injecta.com

CE
2460